

ALL-STAR^{team}

The Pro's Choice Product Line-Up

This winning team can help your sports field deliver it's best performance.

RED^{INFIELD} CONDITIONER



Designed to meet the challenges of wet, dry or compacted infields, this unique durable granule helps create passageways for drainage and eliminate compaction for truer bounces and safer play.

SELECT^{PREMIUM INFIELD} CONDITIONER



This premium infield conditioner keeps infields smooth, safe and resilient. Its specially sized granules and red color makes the perfect infield topdressing.

PRO^{red} PREMIUM RED TOPDRESSING



This premium topdressing is the only deep red conditioner that maintains its rich color. Used by professional groundskeepers to achieve a championship look and formulated for uniform particle size and durability.

rapid^{DRY} DRYING AGENT



Stay in the game with Rapid Dry drying agent. These tiny granules are designed to quickly wick away excess water from your infield and keep your games playing safely and without delay.

PRO^{mound} PACKING CLAY



A unique blue gumbo packing clay, Pro Mound bonds to form a solid subsurface that allows players to "dig in" and establish footing without leaving large holes. Also available in preformed bricks.

PRO^{mound} RED



This premium mound clay offers all of the benefits of our Pro-Mound packing clay with a deep red color. Give your mound championship looks and playability with this unique red clay.



Pro's
Choice

Pro
Mound

Bricks



Step #1: Remove top 3-4" of top soil.



Step #2: Install by lining bricks up edge to edge.



Step #3: Water and allow to soak for 1-2 hours.

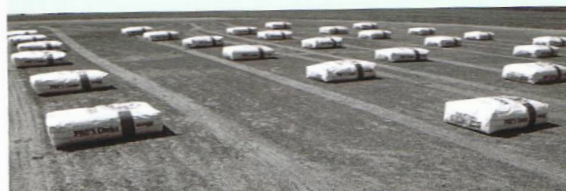


Step #4: Cover with infield mix, tamp and finish with Pro's Choice.

Pro's
Choice

Select

Infield Conditioners
Top Dressing



Step #1: Position 20-60 bags evenly on skinned area.



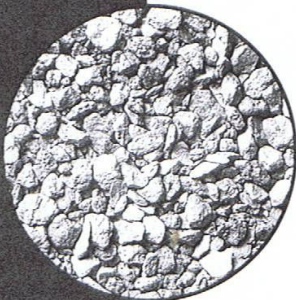
Step #2: Empty into piles and spread evenly with rake or nail drag.



Step #3: Level and fine drag for even, finished appearance.



Step #4: For deep red color lightly water. Topdress as needed throughout season.



SoilmasterTM

soil conditioner

Soilmaster soil conditioner is the only product in the industry with the deep red color professionals demand. The red color is even enhanced when the field is wet down before a game. It has an optimized mix of particle sizes for use on both infields and turf. The larger granules help fracture compacted soil, opening narrow channels for water flow. The smaller particles interconnect these channels and absorb excess moisture. Working together, they set up a capillary system which can absorb water effectively and prevent puddling and rain-outs. Soilmaster granules are very durable and will remain permanently rigid in the soil, releasing stored water as needed to help prevent top-dusting in arid conditions.

To Renovate Infields:

1. Position bags of Soilmaster soil conditioner evenly over the entire skinned area of the infield.

USAGE RATES FOR STANDARD FIELD RENOVATION*

Regulation Field	Softball Field	Little League Field
12 Tons (480 Bags)	10 Tons (400 Bags)	5 Tons (200 Bags)

Open and empty bags into piles then spread Soilmaster soil conditioner over the surface with a drag mat.

2. Using a rototiller, blend the soil conditioner into the top 3 inches of soil. Use a drag mat to breakup any clumps and to blend the product into the surface.
3. Moisten the infield lightly and roll with a one-ton roller or hand roller. This will smooth and firm up the playing surface, allowing it to settle.
4. Continue to drag the infield slowly until low spots are level and the soil has loosened. Topdress with at least 20 bags of Soilmaster soil conditioner or Soilmaster Select topdressing and fine drag the surface again.

For that professional ballpark look, topdress periodically with Soilmaster Select professional topdressing.

To Condition Infields:

Moisten skinned areas and spread Soilmaster soil conditioner over the entire infield. Apply more to problem areas. Work Soilmaster into the top 1 inch of soil with a nail drag or rake. Smooth with a drag mat. Topdress as above.

USAGE RATES FOR STANDARD FIELD CONDITIONING*

Regulation Field	Softball Field	Little League Field
6 Tons (240 Bags)	5 Tons (200 Bags)	2 Tons (80 Bags)

Long Term Benefits:

Because Soilmaster soil conditioner granules are heat-treated to enhance durability and reduce breakdown, they continue to work in your field season after season, substantially reducing maintenance costs and labor.

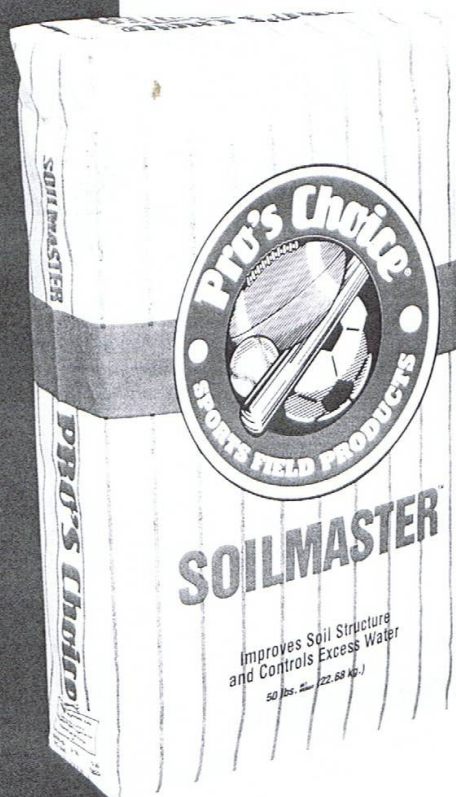
* Application rates of Soilmaster conditioner can vary depending on current field conditions. Ask your Pro's Choice representative for recommendations regarding special conditions. When renovating an infield, the general application rule of thumb is 1.5 tons of Soilmaster conditioner per every 1000 square feet of skinned area. For conditioning, the rule of thumb is 0.75 tons per 1000 square feet.

Soilmaster soil conditioner is packaged in 50 lb. bags and shipped in pallets of 40 bags each, in bulk and in bulk bags.

Pro's Choice

410 North Michigan Ave., Suite 400 • Chicago, Illinois 60611 • Phone: 800.648.1166 • email: proschoice@oidri.com • website: www.proschoice1.com

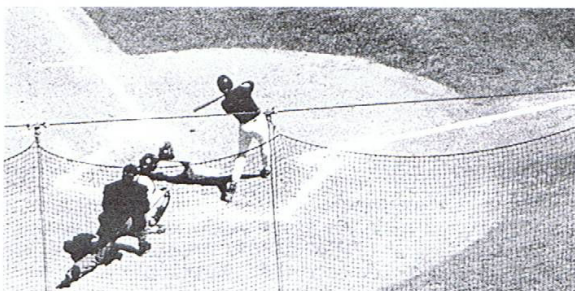
Pro's Choice®



Soilmaster™ soil conditioner

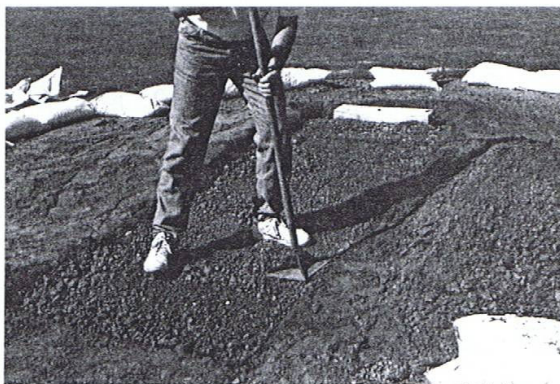
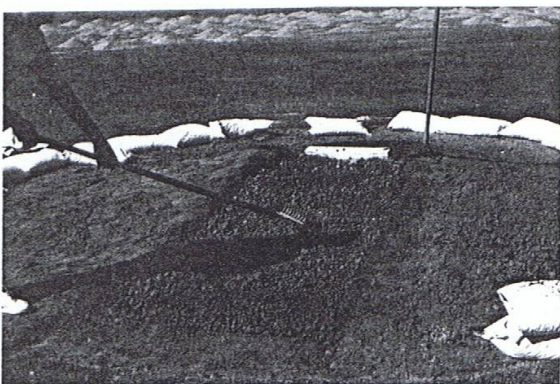
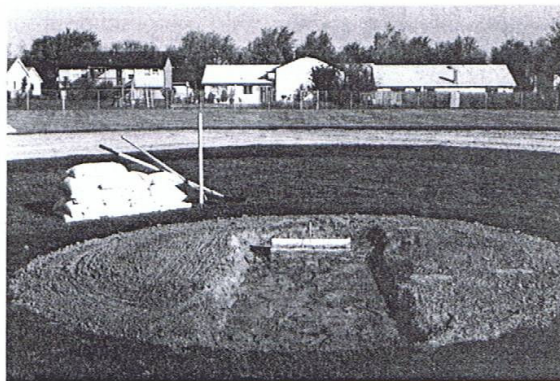
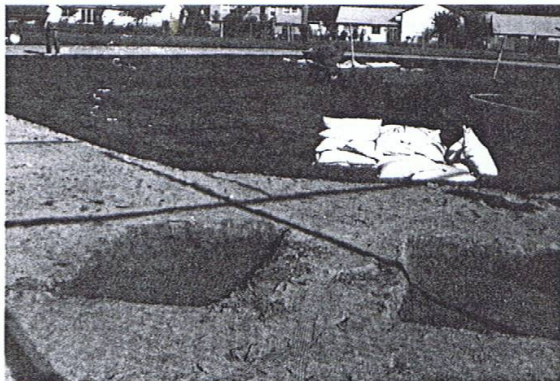
Use this all-star veteran...

to improve the composition, color and playability of your field, season after season. Designed to meet the challenges of wet, dry or compacted infields, this unique, highly-absorbent montmorillonite product contains the right combination of particle sizes to blend easily into the existing infield mix and create a more porous soil profile. Soilmaster absorbs excess water and facilitates drainage, eliminating puddles, slick spots and muddy conditions. It also alleviates compaction giving truer bounces, fewer injuries and surer footing. Your field bounces back quickly, even after a hard rain. Soilmaster soil conditioner's tiny pores also absorb and hold excess moisture, releasing it gradually to keep your playing surface virtually dust-free, firm and resilient over time.

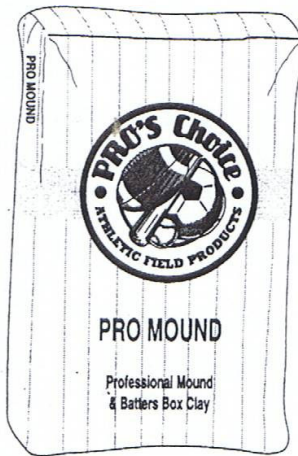


Ask about our
entire team of
sports field
products for top
performance on
your baseball,
football and
soccer fields.

PRO'S CHOICE PRO MOUND™



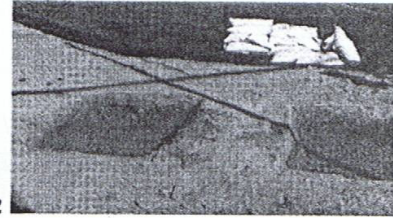
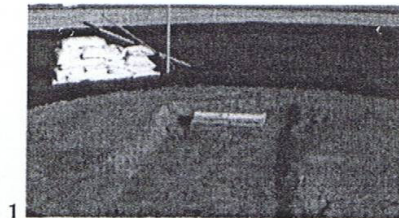
MOUND/BATTERS BOX CLAY



PRO MOUND®

PRO MOUND is a unique packing clay that bonds to form a solid subsurface base at the mound and batters box areas.

- Allows the pitcher and batter to "dig-in" and establish the footing they need without creating large holes.
- Quick and easy to install requiring only a shovel, rake, tamp and water.
- Packaged in convenient-to-use plastic bags which can be stored outside.
- Highly durable packing clay that remains firmly intact, is long lasting and easy to manage.



INSTALLING PRO MOUND

1. Remove the top 4 inches of soil from high wear areas: in front of the rubber, plateau and landing areas or, completely to the circle perimeter as shown.
2. At the batters boxes and catchers station also remove 4 inches of soil. This can be contained to only the wear areas or the entire box dimensions.

Once the areas are prepared and ready for the addition of PRO MOUND, apply water to the bottom of each area and let it soak in. This will help to form a bonding base with the existing soil.

3. Apply a two inch layer of Pro Mound to each excavated area and compact firmly with a tamp. Then lightly water these areas prior to adding the next two inch layer.
4. The next layer will bring the Pro Mound to near grade level. After it is tamped firmly cover each area with a skin coating of infield soil and tamp again.

It is recommended that the mound and batters' boxes be lightly watered and tarp covered when not in use. If this is not possible, covering them with a light coating of SOILMASTER can assist in maintaining correct moisture levels.

REPAIR

Sweep out any divots made in the Pro Mound and use a rake to level off high spots. Then moisten the areas to be repaired, fill the divots with Pro Mound and tamp firmly. Cover with infield soil and tamp again.

Approximately forty 50lb bags of PRO MOUND are needed to resurface and maintain the mound, batters boxes and catchers station.

PRO MOUND is packaged in 50lb. bags and shipped on pallets - 40 bags per pallet.

